

WHEN EVACUATING

- Ensure that you know where your family members are.
- Arrange a specific meeting place in case you are separated.
- If possible, arrange for accommodations for your family. Emergency lodgings may be provided but might not allow pets. Be prepared.
- Make sure you have essentials for at least 3 days as re-entry will be prohibited. This includes:
 - Clothes, medication, glasses, important papers, etc.
 - Pets and pet supplies
 - Cash and credit cards
- Check-in with the Reception Centre, if one has been activated.
- Notify family members that you are safe.
- Relocate livestock to a safe area.

NEED ASSISTANCE?

Assembly Locations will be identified for those without transportation out of town. Listen to the radio and check the District website/social media for Assembly Locations and incident details.

Call 250-997-4221 if you are unable to get to an Assembly Location.

CONTACTS

In case of emergency - call 911

Local Emergency Info Line: 250-997-2018

Ambulance: 1-800-461-9911

Fire Hall: 250-997-4221

Hospital: 250-997-3263

Police: 250-997-3288

Radio CHMM 103.5: 250-997-6277

Air quality or environmental issues:

www.gov.bc.ca/env

Wildfire information: www.bcwildfire.ca

Plan Ahead
Evacuate
Safely

EVACUATION

Plan. Prepare. Act.



Plan Ahead
Evacuate
Safely

EVACUATION ALERTS

Where possible an Evacuation Alert will be issued before an Evacuation Order. When an alert is issued, prepare for an evacuation:

BE PREPARED

- Arrange a meeting place for you and your family
- Plan to move recreational vehicles early
- Write down important contact numbers
- Make sure your vehicle is fuelled and ready
- Pack season appropriate clothes, medication, glasses, important papers etc.
- Ensure you have cash and credit cards
- Make arrangements for pets and livestock, pets cannot be left locked in house or yard
- Check with neighbours to ensure their well-being

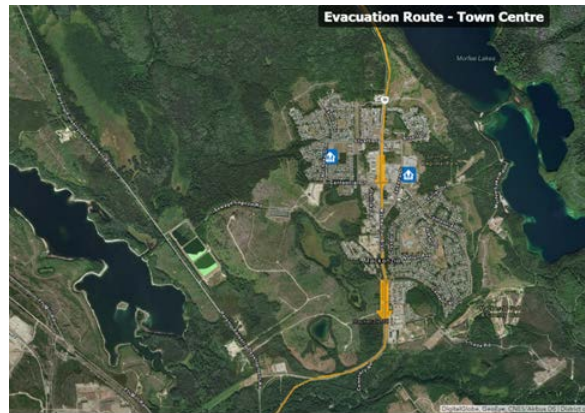
EVACUATION ORDER

The District of Mackenzie has primary responsibility for issuing evacuation orders. When the community is at imminent risk (taking into account time of day, weather forecasts, type of risk and time required to evacuate), the District may issue an evacuation order and request assistance from the RCMP.

People must leave the area immediately. Once you leave your property, you will not be permitted to return until the Order is rescinded and it is safe to return.

EVACUATION ROUTE

In the event of a community-wide evacuation, the primary route is south on Highway 39. Always listen to the radio and emergency personnel for instructions and evacuation route changes.



Assembly Location –
for those who need
evacuation assistance



READY TO GO? PROTECT YOUR HOME

Once you are ready to leave, and only if you have a few extra minutes:

- Close all windows and doors
- Close metal window blinds
- Remove light window curtains and other combustibles from windows
- Place lawn items in a remote corner of the yard and out of the way
- Attach garden sprinklers but do not turn them on
- Leave exterior lights on to make the house easy to find
- Shut off gas and electrical appliances EXCEPT for refrigerators and freezers
- Move propane tanks away from your house