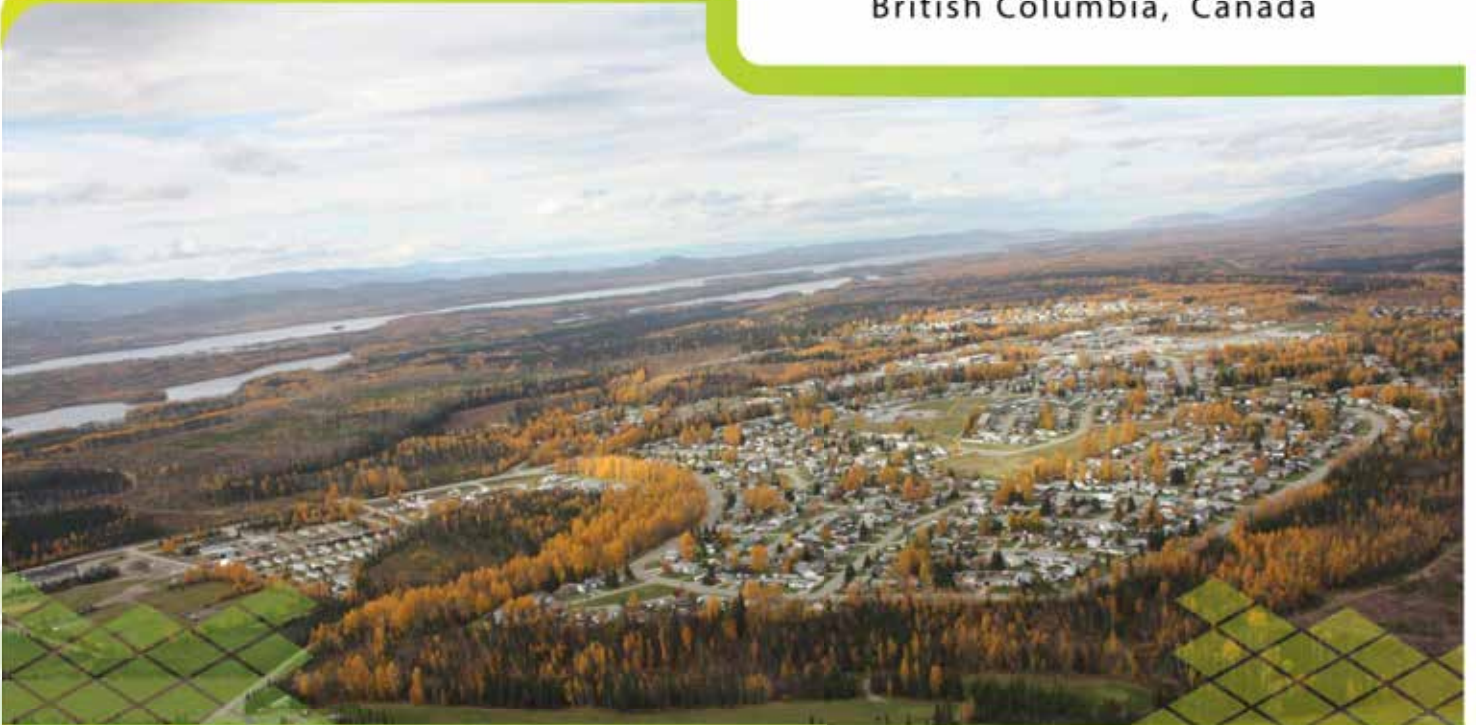


District of

# Mackenzie



British Columbia, Canada



Investment - Ready  
Community Profile



# NORTHERN BC BUSINESS ADVANTAGE

*Northern British Columbia is a strategically located, resource-rich economy with many competitive advantages and incentives for business.*



**British Columbia has one of the most attractive investment climates for business in North America.**

Manufacturers, for example, enjoy benefits such as:

- **Strong economic fundamentals** and market opportunities associated with major, long-term projects
- **Low Tax Rates** (personal and corporate) that rank BC among the lowest in Canada – complemented by sales tax exemptions on machinery and tax credits for research and development expenditures
- **Competitive Operating Costs** including low cost electricity relative to elsewhere in Canada or the US
- **Competitive Wage Rates** reflecting a balanced and growing labour pool
- **Growing Labour Supply** with government initiatives that are driving labour mobility into BC and training our existing workforce assets
- **Welcoming Communities** that keenly encourage new manufacturing and service investments
- **Financial Incentives** for capital investments and job creation in northern BC (up to \$5,000 per new job). *Contact Northern Development Initiative Trust.*



# Welcome to the District of Mackenzie

Dear Potential Investor:

The District of Mackenzie invites you to explore the opportunities we have to offer. We want you to know that we are open for business and willing to work with potential investors. We are fortunate to have one of the most diverse fibre supply areas in the province of British Columbia with only 40% of our timber being pine. The long range outlook for forestry and forestry value added industry in our region is positive. Mackenzie is working hard to take advantage of the opportunities around mining, mineral exploration and green energy as a means of diversifying our economy. We also have low land costs, competitive tax rates, and available power and rail access for new industrial business prospects.

It is the mission of the District of Mackenzie to strive to improve the lifestyle, services and opportunities to our residents and visitors by:

- Maintaining a healthy environment and economic conditions which allow for businesses and individuals to flourish and maximize their potential;
- Providing quality services and programs;
- Providing quality executive and administrative leadership from an open and responsible Council and Administration.

Mackenzie is a great place to live and work today and maintains a high quality of life for its residents. A number of qualities Mackenzie has are:

- A strong sense of pride and community;
- A safe and resilient community;
- Outdoor recreation opportunities that are world-class;
- Clean air and clean water;
- First class municipal recreation facilities;
- No municipal debt;
- Outstanding snow removal services;
- Good health outreach services.

We encourage you to consider investing in our community and are more than willing to work with you to explore opportunities. If you have any questions, or would like additional information, please feel free to contact Diane Smith, our Community Development Officer, at:

Email: [diane@district.mackenzie.bc.ca](mailto:diane@district.mackenzie.bc.ca)

Tel: 250-997-3221

Fax: 250-997-5186

Sincerely,



Pat Crook,  
Mayor



# CONTENTS

<b>1. Demographics .....</b>	<b>6</b>
Population	6
Household Income	6
Workforce Education Attainment	7
Language Knowledge	7
<b>2. Labour Force .....</b>	<b>8</b>
Employment by Industry	8
Top Employers	9
Average Income By Occupation – Northern BC	9
Labour Force	11
Employment Rate	11
Labour Participation Rate	11
Commuting	11
<b>3. Payroll Costs .....</b>	<b>12</b>
Workers Compensation – 2012	12
Employment Insurance – 2012	12
Social Insurance (Canada Pension Plan) – 2012	13
<b>4. Higher Education .....</b>	<b>14</b>
Four Year Institutions	14
<b>5. Transportation .....</b>	<b>15</b>
Major Transportation Routes	15
Highways	17
Northern Corridor Specifications	18
Railroads	20
Commercial Airports	21
Port Shipping Distances	26
<b>6. Industrial &amp; Commercial Land Use.....</b>	<b>27</b>
Land Zoned and Designated in Official Community Plan	27
Local Permit Approvals - 2011	28
<b>7. Utilities .....</b>	<b>30</b>
Water System	30
Waste Water System	30
Landfill and Waste Management	31
Licensed Hazardous Materials Disposal	31
Electric Power	32

Natural Gas	35
Telecommunications	36
<b>8. Business Support Services .....</b>	<b>37</b>
<b>9. Government .....</b>	<b>38</b>
Municipal Government	38
Regional District	38
Provincial	38
Provincial Government Representation	39
Federal Government Representation	39
<b>10. Housing .....</b>	<b>40</b>
Housing Characteristics	40
Average Housing Values	40
<b>11. Taxation .....</b>	<b>41</b>
Corporate Income Tax	41
Personal Income Tax	41
Sales / Use Tax	41
Sales Tax Rate by Utility	42
Property Tax	43
<b>12. International Resources .....</b>	<b>44</b>
Investment and Business Support Offices	44
Financial Institutions	45
Employment Assistance	45
Air Transportation Service	46
<b>13. Quality of Life .....</b>	<b>48</b>
Climate	48
Culture	49
Health	51

## 1. DEMOGRAPHICS

### POPULATION

#### MACKENZIE & AREA

Population By Age Group	Population (2011)	% Distribution
Under-18	835	23.8%
18-34	570	16.2%
35-54	1210	34.4%
55-74	825	23.5%
75-Older	75	2.1%
Total:	3515	100.0%
Median Age:	42.50	

#### NORTHERN BC

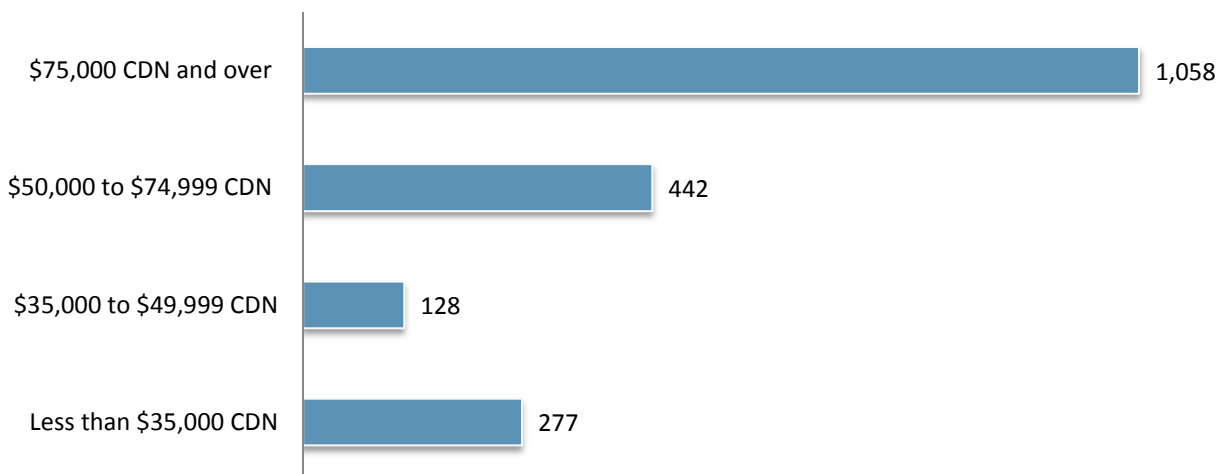
Population By Age Group	Population (2011)	% Distribution
Under-18	83,215	25.8%
18-34	58,620	18.2%
35-54	95,290	29.6%
55-74	69,725	21.6%
75-Older	15,220	4.7%
Total:	322,070	100.0%
Median Age:	44.0	

Data Source: BC Stats – Data Source: Census Community Profile – <http://www12.statcan.gc.ca/census-recensement/2011/dp-pd/prof/details/page.cfm?Lang=E>

### HOUSEHOLD INCOME

Household Income	2006
Number of Households	1,355
Median Income - All Families	\$89,654
Median Income After Tax – All Families	\$73,191

Data Source: Census Community Profile – [www12.statcan.gc.ca/census-recensement/2006/dp-pd/prof/92-591/index.cfm?Lang=E](http://www12.statcan.gc.ca/census-recensement/2006/dp-pd/prof/92-591/index.cfm?Lang=E)



## WORKFORCE EDUCATION ATTAINMENT

Level of Education	# Attained	%
High School Diploma Only	1,235	31%
College/University Certificate/Diploma	645	16%
Less than High School Diploma	1,005	25%
Apprenticeship/Trades Certificate/Diploma	770	20%
University Bachelors Degree	230	6%
University Graduate Degree/Certificate	50	1%
University Medical/Dentistry/Optometry Degree	10	0%

*Data Source: StatsCan – 2006 Census – “Education”*

## LANGUAGE KNOWLEDGE

Languages Spoken	Citizens
English	3,480
French	100
Punjabi	45
German	45
Chinese	10
Ukrainian	10
Dutch	5
Tagalog (Filipino)	5

*Data Source: StatsCan – 2011 Census – “Mother Tongue”*



## 2. LABOUR FORCE

### EMPLOYMENT BY INDUSTRY

#### MACKENZIE & AREA

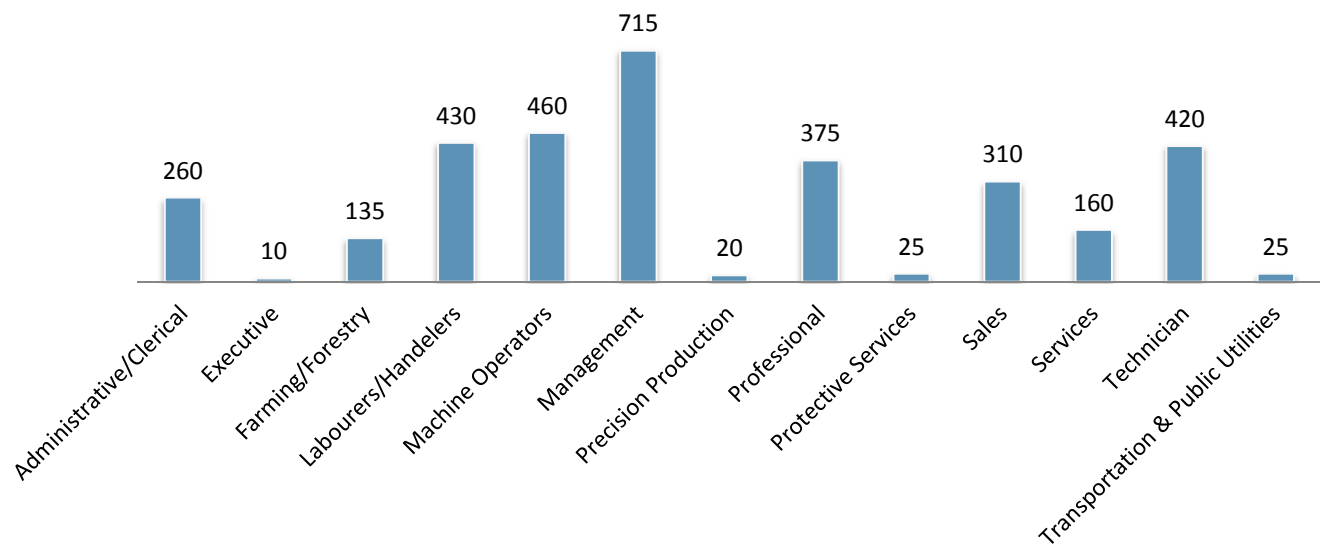
Sector (Industry)	Number
Manufacturing	1,250
Other Services	395
Agriculture & Resources Industries	320
Business Services	270
Retail Trade	265
Educational Services	145
Health Care & Social Services	120
Construction	85
Finance and Real Estate	60
Wholesale Trade	40
Total	2,940

#### NORTHERN BC

Sector (Industry)	Number
Services	32,940
Manufacturing	21,310
Retail Trade	18,475
Government	43,120
Transportation & Utilities	12,305
Forestry & Logging	16,230
Mining and Oil & Gas	6,580
Finance, Insurance, Real Estate	6,040
Construction	12,385
Wholesale Trade	5,455
Total	174,840

Data Source: Stats Canada 2006 – “Mackenzie Community Profile” - [www12.statcan.ca/census-recensement/2006/dp-pd/prof/92-591/index.cfm?Lang=E](http://www12.statcan.ca/census-recensement/2006/dp-pd/prof/92-591/index.cfm?Lang=E)

### EMPLOYMENT BY OCCUPATION



Data Source: StatsCan – 2006 Census – “Occupation”



## TOP EMPLOYERS

Company	Product/Service	# of Employees	Ownership	Website
Mackenzie Pulp Mill	Pulp	211	Private	<a href="http://mackenziepulp.com/">http://mackenziepulp.com/</a>
Canfor Forest Products Ltd.	Lumber	185	Private	<a href="http://www.canfor.com">www.canfor.com</a>
Conifex Mackenzie Forest Products Inc.	Lumber	148	Private	<a href="http://www.conifex.com">www.conifex.com</a>
District of Mackenzie	Local Government	80	Public	<a href="http://www.district.mackenzie.bc.ca">www.district.mackenzie.bc.ca</a>
Mackenzie Hospital and Health Centre	Health Care Services	60	Public	
East Fraser Fiber	Chip/Finger Joint Plant	60	Private	<a href="http://www.parallel55.com">www.parallel55.com</a>
Ministry of Natural Resources	Government Services	45	Public	
College of New Caledonia	Education	30	Public	<a href="http://www.cnc.bc.ca">www.cnc.bc.ca</a>

Data Source: Northern Development Research – [www.northerndevelopment.bc.ca](http://www.northerndevelopment.bc.ca)

## AVERAGE INCOME BY OCCUPATION – NORTHERN BC

Occupation	Average wage (\$/Hour)(\$CDN)	Effective Date
Administrative Clerks	20.46	2012
Bookkeepers	20.00	2012
Business Development Officers	28.01	2012
Carpenters	23.00	2012
Civil Engineers	36.06	2012
Computer Engineers	36.06	2012
Crane Operators	28.00	2012
Drafting Technicians	26.79	2012
Electrical Engineers	32.00	2012
Forestry Technicians	27.00	2012
Geological Engineers	26.73	2012
Heavy Duty Equipment	30.00	2012
Heavy Equipment Operators	26.75	2012
Industrial & Manufacturing Engineers	28.08	2012
Industrial Electricians	32.00	2012

Labourers in Wood, Pulp and Paper Processing	20.00	2012
Labourers, Processing Manufacturing and Utilities	18.00	2012
Logging Machinery Operators	26.00	2012
Machinists	25.95	2012
Mechanical Engineers	35.00	2012
Mine Labourers	21.42	2012
Mining Engineers	34.23	2012
Petroleum Engineers	37.40	2012
Primary Production Managers	34.14	2012
Purchasing Managers	31.87	2012
Sales Representatives	25.00	2012
Senior Managers	32.08	2012
Shippers and Receivers	15.00	2012
Steamfitters	27.50	2012
Trade Helpers and Labourers	18.00	2012
Truck Drivers	23.00	2012

- For a complete list of Wages and Salaries in Northern BC visit the link below
- [www.workingincanada.gc.ca/LMI\\_report\\_area.do?reportOption=wage&PROVINCE\\_ID=59&GEOAREA\\_CD=29304&selectLocation=Continue](http://www.workingincanada.gc.ca/LMI_report_area.do?reportOption=wage&PROVINCE_ID=59&GEOAREA_CD=29304&selectLocation=Continue)



## LABOUR FORCE

	Population
<b>Total Population 15 and over</b>	3,935
<b>In Labour Force</b>	2,995
<b>Employed</b>	2,685
<b>Unemployed</b>	315

*Data Source: StatsCan – 2006 Census – “Community Profile”*

## EMPLOYMENT RATE

	% of Population
<b>Unemployment Rate</b>	12.0%
<b>Labour Participation</b>	70.1%

*Data Source: StatsCan – 2006 Census – “Community Profile”*

## LABOUR PARTICIPATION RATE

	Labour Participation Rate
<b>Male</b>	72.8%
<b>Female</b>	61.4%

*Data Source: StatsCan – 2006 Census – “Community Profile”*



## COMMUTING

Place of Residence	Place of Work	Number of People
<b>Prince George</b>	Mackenzie	45
<b>Fraser-Fort George G</b>	Mackenzie	25
<b>Fraser-Fort George A</b>	Mackenzie	25
<b>Mackenzie</b>	Mackenzie	2,145

*Data source: Stats Canada - 2006 Census - “Commuting Flow”*

### 3. PAYROLL COSTS

#### WORKERS COMPENSATION – 2012

		Notes
<b>Average Cost of All Manufacturing Per \$100 Payroll</b>	\$1.54 CDN	Rates set by employer's business activity. Applies up to maximum gross earnings of \$73,700(CDN) per year.
<b>Average Rate for Office Workers Per \$100 Payroll</b>	\$0.30 CDN	There is no separate rating for office occupations in BC- the applicable industry rating applies to all workers. Rates for Business Services range from \$0.09-\$0.30 per \$100 of payroll. Average of \$0.30(CDN).
<b>Maximum Weekly Benefit (Net)</b>	\$974.21 CDN	Maximum per employee set at 90% of average net earnings (after deductions for income taxes, Canada Pension Plan & Employment Insurance), up to maximum wage of \$73,700 per year(CDN).

#### EMPLOYMENT INSURANCE – 2012

		Notes
<b>Taxable Base</b>		Based on gross payroll up to a gross per worker salary of \$45,900 per year(CDN).
<b>Percentage Rate(Employer Premium)</b>		
▪ <b>Employee Rate</b>	1.83%	Maximum annual contribution per worker is \$839.97(CDN).
▪ <b>Employer Rate</b>	2.56%	Maximum annual contribution per worker is \$1,176.00(CDN).
▪ <b>Maximum Weekly Benefits</b>	\$485.00 CDN	





## SOCIAL INSURANCE (CANADA PENSION PLAN) – 2012

		Notes
<b>Taxable Base</b>	Gross Payroll \$3,500 CDN	Based on annual gross salary up to \$50,100.00, basic exemption of \$3,500. Both employers and employees are required to contribute to the Canada Pension Plan.
<b>Employee/Employer Contribution</b>	4.95%	Employer premium equal to employee premium
<b>Maximum Annual Employer Contribution Per Employee</b>	\$2306.70 CDN	Employer contribution matches employee contribution.
<b>Rate</b>	4.95%	
<b>Maximum Annual Self Employed Contribution</b>	\$4,613.40 CDN	

Data Source: TaxTips.ca – <http://www.taxtips.ca/cppandei.htm>

Data Source: WorkSafeBC – [www.worksafebc.com](http://www.worksafebc.com)



## 4. HIGHER EDUCATION

### FOUR YEAR INSTITUTIONS

Institution	College of New Caledonia
Campus/Address	Mackenzie Campus 540 Mackenzie Boulevard Box 2110 Mackenzie, BC V0J 2C0 Tel: 250-997-7200
Other Campuses	Prince George (Main Campus), Fort St. James, Quesnel, Burns Lake, Vanderhoof, Valemount
Website	<a href="http://www.cnc.bc.ca">www.cnc.bc.ca</a>
Driving Distance from Community	Located within the community.
Enrolment (2010/11):	
Total	235
Full-Time	117

*Data Source: Northern Development Research*

Institution	University of Northern British Columbia
Campus/Address	UNBC Prince George Campus 3333 University Way Prince George, BC V2N 4Z9 Tel: 250-960-5555
Other Campuses	Fort St. John, Quesnel, Terrace
Website	<a href="http://www.unbc.ca">www.unbc.ca</a>
Driving Distance from Community	183 km
Enrolment (2010/11):	4,266

*Data Source: Northern Development Research – [www.northerndevelopment.bc.ca](http://www.northerndevelopment.bc.ca)*



## 5. TRANSPORTATION

### MAJOR TRANSPORTION ROUTES

#### PACIFIC GATEWAY

British Columbia's ports in Vancouver, Kitimat, Stewart and Prince Rupert are Asia's closest ports of entry on the west coast of North America, up to 58 hours closer than the ports of Los Angeles and Long Beach.

Canadian ports and airports are seamlessly integrated with road and rail connections to all major U.S. economic centers. British Columbia is the only gateway on the west coast of the Americas served by three transcontinental railways. Today, Canada's Pacific Gateway is an integrated, secure, reliable transportation network that includes world-class airports, seaports, railways, roadways and border crossings, bringing Canada and the North American market to Asia and the world. Canada's Pacific Gateway, through British Columbia's ports in Vancouver, Kitimat, Stewart and Prince Rupert, offers Asian shippers the most direct route between Asia and North America.

Canada's Pacific Gateway is a strong commitment by government and industry partners to make British Columbia's ports the preferred gateway for Asia-Pacific trade, with the most competitive port system and supply chain on the west coast of the Americas. This commitment builds on Canada's longstanding and strong cultural and economic ties with Asia. In the emerging new global economy, Canada's Pacific Gateway is a gateway to the future.



## NORTHERN CORRIDOR

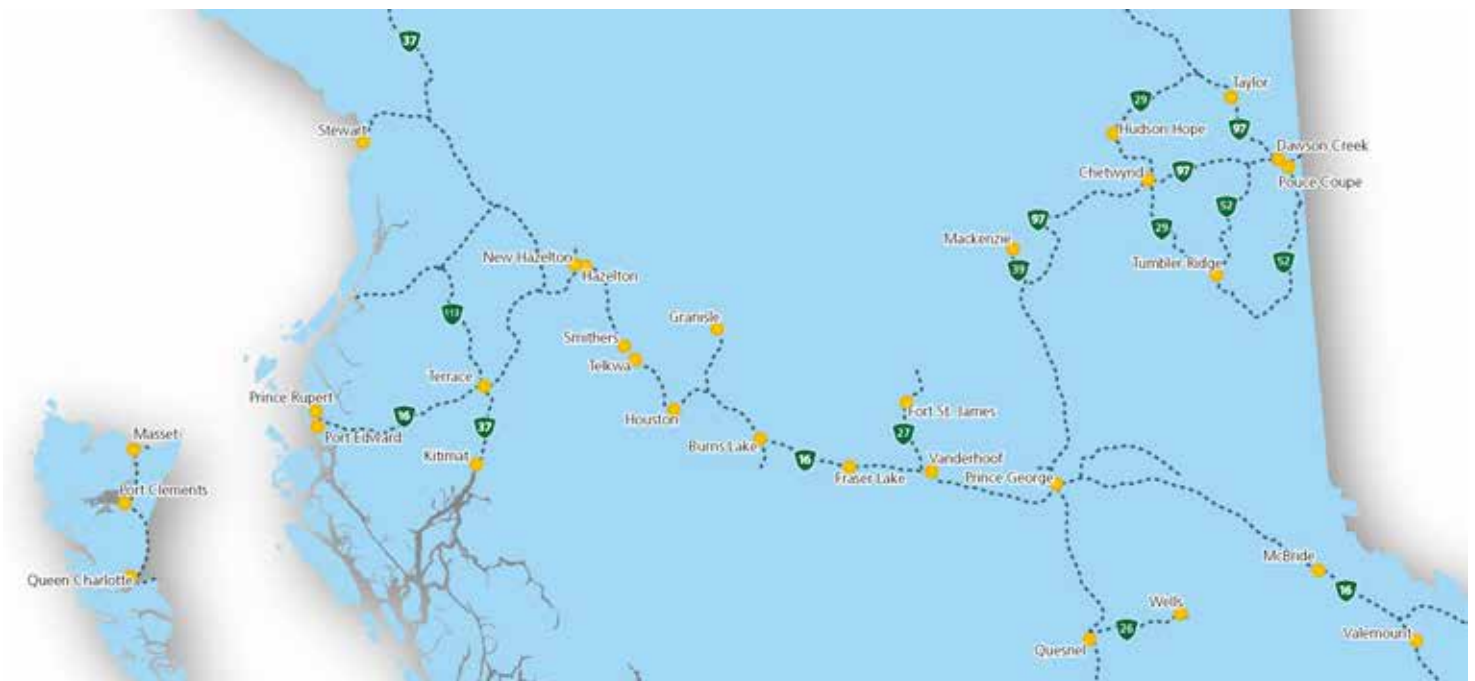
The Northern Corridor spans over half of continental Canada and reaches well into the heartland of North America south of Chicago, USA. It travels through the lowest elevations of the Americas great continental divide, also known as the “Yellow Head Pass,” and forms the straightest, shortest, flattest route for Asian- North American trade. Three Northern British Columbia ports provide efficient access to this corridor; Kitimat, Stewart and Prince Rupert. Each port offers unique advantages and services that meet the needs of the region and international trade.

Trans-continental rail, Trans Canada Highway and direct air service into international Air Hubs are in place. The corridor services business covered by the North American Free Trade Agreement, through a variety of break bulk and container services in ports operated by governments and those run by private port interests.

The Northern Corridor is less impeded by road closures, significant weather patterns and avalanches than the Southern Canadian corridor. It provides “one less day” shipping advantage to or from Asia compared to all other North American Port locations including Vancouver and all USA pacific Ports.

Existing trade in Kitimat and Prince Rupert include aluminum and paper shipped via privately owned break-bulk terminals, transshipment of petrochemicals through privately owned facilities, barge service and container port services. Growth is expected in energy exports including liquid natural gas, petroleum, and container capacity.

Canadian National Rail (CN Rail) reaches well into the heartland of America with shipping agreements in place with major US rail carriers. CN has made significant investments in the Northern Corridor rail line including extended sidings, upgrades to signal systems, increased bridge and tunnel clearances. The corridor is serviced by five international airports and four northern airports with Prince George offering international services. The largest passenger service airport west of Prince George and north of British Columbia’s Okanagan region is the Terrace-Kitimat Northwest Regional airport.





HIGHWAYS



## NORTHERN CORRIDOR SPECIFICATIONS

Commercial Vehicle Without Permit	Specifications
Maximum Width	2.59 meters
Maximum Height	4.15 meters
Maximum Vehicle Weights	
Super B	63,500 kgs
Single Axel	9,100 kgs
Tandem Axle (Set)	17,000 kgs
Tridem Axle (Set)	24,000 kgs

Commercial Vehicle With Permit	Specifications
Maximum Width	4.4 meters
Maximum Height	4.72 meters
Maximum Vehicle Weights	
Super B	64,000 kgs
Single Axel	9,100 kgs
Tandem Axle (Set)	23,000 kgs
Tridem Axle (Set)	29,000 kgs

## OVERHEAD CLEARANCE

Yellowhead Highway 16 from BC Border to Prince Rupert	Clearance (meters)
▪ Khyex River Bridge	5.95m
▪ Kitsequcla Overpass	5.7m
▪ Tete Jaune underpass	4.96m
<b>Highway 37 from Hwy 16 North to Yukon Border</b>	
▪ Irving River Bridge #2	5.74m
▪ Devil Creek Bridge	5.74m
<b>Highway 37 from Hwy 16 South to Kitimat</b>	
▪ Williams Creek Bridge	4.97m
▪ Hirsch Creek Bridge	4.72m
▪ Kitimat River Bridge	5.08m
<b>Highway 37A from Hwy 37 To Stewart</b>	
▪ No Clearances	
<b>Highway 97 from Dawson Creek to Quesnel</b>	
Bellows CN Railway Overpass	4.96m
Hixon CN Railway Overpass	4.90m
Stoner CN Railway Overpass	4.70m
Red Rock CN Railway Overpass	4.64m
Bijoux CN Railway Overpass	6.30m
West Pine CN Railway Overpass	4.92m

East Pine CN Railway Overpass	5.00m
Salmon River Bridge	5.40m
Parsnip River Bridge	5.05m

## PROVINCIAL PERMIT CENTRE

For more information on receiving a commercial vehicle permit please contact **1-800-559-9688**. The core hours of service are from 5am to 10pm, seven days a week and most statutory holidays. The 1-800 number is available to callers anywhere in Canada or the United States. Permits available through this line include:

- non-resident commercial vehicle permits
- term oversize and overweight permits
- single trip oversize and overweight permits
- motor fuel tax permits
- highway crossing permits
- extra-provincial temporary operating permits



## HIGHWAY DISTANCES

Metro Area	Distance (Km)
Prince Rupert	900 km
Prince George	183 km
Kamloops	710 km
Edmonton	923 km
Vancouver	968 km
Calgary	970 km
Victoria	1,069 km
Seattle	1,084 km
Portland	1,363 km

## RAILROADS

CN Rail	<a href="http://www.cn.ca">www.cn.ca</a>
Main or Branch Line:	Branch and Main
Shortline or National:	National and Shortline
Distance to Nearest Switching Yard:	0 km
Capabilities	Cargo-Bulk, Container, Liquid, Multi Commodities

Data Source: Northern Development Research –  
[www.northerndevelopment.bc.ca](http://www.northerndevelopment.bc.ca)





## COMMERCIAL AIRPORTS

<b>Mackenzie Airport</b>	
<b>Hub Status</b>	Class C
<b>Distance From Community</b>	5.6 km
<b>Hours of Operation</b>	24 hours/7 days
<b>Approved Capital Expansion</b>	No
<b>Customs Point of Entry</b>	No
<b>Foreign Trade Zone</b>	No
<b>Full Instrumentation</b>	No
<b>No. of Runways</b>	1
<b>Runway Length</b>	1,585 m
<b>Carriers</b>	Northern Thunderbird Air, Pacific Western Helicopters, Yellowhead Helicopters

Data Source: Northern Development Research – [www.northerndevelopment.bc.ca](http://www.northerndevelopment.bc.ca)



<b>Prince George Airport</b>	
<b>Hub Status</b>	International
<b>Distance From Community</b>	196 km
<b>Hours of Operation</b>	24hrs/7days
<b>Approved Capital Expansion</b>	\$2,000,000 capital expansion
<b>Customs Point of Entry</b>	Yes
<b>Foreign Trade Zone</b>	No
<b>Full Instrumentation</b>	Yes
<b>No. of Runways</b>	3
<b>Runway Length</b>	3,490 m; 1,714 m; 1,352 m
<b>Carriers</b>	Air Canada Jazz, Central Mountain Air, WestJet
<b>No. of Days Closed From Bad Weather in last 3 yrs</b>	1 week of fog activity
<b>Weekly Non-Stop Flights</b>	83



## PORTS

### PORT OF PRINCE RUPERT

#### Port of Prince Rupert

**Distance from Prince Rupert** 900 km

**Location of Port** Prince Rupert

**Terminals** Fairview (Container) Terminal, Ridley Terminals, (coal, wood pellets), Prince Rupert Grain, Northland Cruise Terminal

**Type of Port** Ocean

**Channel Depth** 35-55 meters

**Shallow Water Barging Facilities** Yes

**Deep Water Barging Facilities** Yes

**General Cargo Facilities** Yes

**Containerized Facilities** Yes

**Refrigerated Container Facilities** Yes

**Cruise Ship Facilities** Yes

**Storage Facilities** Yes

**Highway Serving Port** #16

**Railway Serving Port** CN Rail

**Types of Services:** Bulk/break-bulk: Coal, Petroleum Coke, Wood Pellets, Grain, Logs,

**Imports** Retail (including electronics, apparel, furniture, auto parts); petroleum products; industrial inputs (tiles, glass)

**Exports** Midwest – specialty crops; scrap metal, recycled paper  
British Columbia – Forest products (lumber, pulp, logs); aluminum, seafood

**Shipping Lines** Cosco, Hanjin, Yang Ming, K-Line, Quickload Transloading Services, Shipping Agents, GW Nickerson Co., Northcoast Shipping, Rupert Marine Shipping, Tidal Transport & Trading Ltd.



## PORT OF KITIMAT

### Private Port of Kitimat

<b>Location of Port</b>	Kitimat
<b>Terminals</b>	Rio Tinto Alcan - Break Bulk Terminal Methanex Petrochemical Terminal Eurocan Breakbulk Terminal
<b>Type of Port</b>	Deep Sea
<b>Channel Depth</b>	45- 200 fathoms, 18-185 Meters (59-607 Feet)
<b>Turning Basin</b>	1.1 - 2.2 nautical miles
<b>Shallow Water Barging Facilities</b>	Yes
<b>Deep Water Barging Facilities</b>	Yes
<b>General Cargo Facilities</b>	Yes
<b>Containerized Facilities</b>	No
<b>Storage Facilities</b>	Yes
<b>Highway Serving Port</b>	Highway # 16 via #37
<b>Railway Serving Port</b>	CN Rail
<b>Types of Services</b>	Bulk/ Break-bulk, Methanol, Amonia condensate, Pitch, Alumina ,Bauxite condensate
<b>Imports</b>	Pitch, Alumina, Bauxite Condensate, Methanol
<b>Exports</b>	Kraft Paper, Aluminum Sheeting
<b>Shipping Lines</b>	Waterfront Shipping, Gearbulk
<b>Shipping Agents</b>	GW Nickerson Co., TNC Canada
<b>Customs Brokers</b>	GW Nickerson Co., Moore E T S Services
<b>Tug &amp; Barge</b>	SMIT Marine, Seaspace International





## CUSTOM POINT OF ENTRY

Canadian Border Services Agency	Prince George
Type of Entry Point	Airport
Location	4141 Airport Road Prince George, BC Canada V2N 4M6 Tel: 250-963-2400



## PORT SHIPPING DISTANCES

The NW Transportation and Trade Corridor ports (Kitimat and Prince Rupert, Stewart) are between 1 and 1 1/2 day closer to general Asia Pacific markets than the Ports in British Columbia's lower mainland; and the Vancouver Ports. The Southern Ports are closer to the Panama Canal and subsequently, the Atlantic. The following table is in nautical miles. The Time/Speed/Distance Calculations are at 16.1439 Kn/Hr., the average speed The Port of Vancouver uses for calculating their shipping to Yokohama, Hong Kong, Kaohsiung (Taiwan) and Xingang (China). Deep-sea vessels travel at various speeds between 14Kn/Hr and 20Kn/Hr. The 'great circle shipping route' to Asia from North America has well documented ocean currents and weather/wind patterns which allows for accurate estimates.

	Kitimat	Prince Rupert	Stewart	Vancouver	Los Angeles	Yokohama (Japan)	Hong Kong	Kaohsiung Kang(Taiwan)	Xingang (China)
<b>Kitimat</b>	--	121 NM 7.5 Hrs	264 NM 17 Hrs	400 NM 1 Day	1,391 NM 3.5 Days	3,941 NM 10 Days	5,444 NM 14 Days	6,,187 NM 16 Days	6,187 NM 16 Days
<b>Prince Rupert</b>	121 NM 7.5 Hrs	--	123 NM 10 Hrs	477 NM 1.2 Days	1,432NM 3.6 Days	3,810 NM 9.8 Days	5,323 NM 13.7 Days	6,110 NM 15.7 Days	6,110NM 15.7 Days
<b>Stewart</b>	264 NM 17 Hrs	123 NM 10 Hrs	--	573 NM 1.5 Days	1,529 NM 4 Days	3,896 NM 10.3 Days	5,406 NM 14.1 Days	5,155 NM 13.4 Days	4,749 NM 12.5 Days
<b>Vancouver</b>	400 NM 1 Day	477 NM 1.2 Days	573 NM 1.5 Days	--	991 NM 2.5 Days	4,262 NM 11 Days	5,763 NM 15 Days	6,587 NM 17 Days	7,578 NM 20 Days
<b>Los Angeles</b>	1,391 NM 3.5 Days	1,432 NM 3.6 Days	1,529 NM 4 Days	991 NM 2.5 Days	--	4,839 NM 12.5 Days	6,380 NM 18 Days	7,578 NM 20 Days	8,959 NM 23 Days
<b>Yokohama</b>	3,941 NM 10 Days	3,810 NM 9.8 Days	3,896 NM 10.3 Days	4,262 NM 11 Days	4,839 NM 12.5 Days	--	1,585 NM 4 Days	1,335 NM 3.4 Days	1,335 NM 3.4 Days
<b>Hong Kong</b>	5,444 NM 14 Days	5,323 NM 13.7 Days	5,406 NM 14.1 Days	5,763 NM 15 Days	6,380 NM 18 Days	1,585 NM 4 Days	--	290 NM 18 Hrs	290 NM 18 Hrs
<b>Kaohsiung Kang</b>	6,187 NM 16 Days	6,587 NM 17 Days	5,155 NM 13.4 Days	6,587 NM 17 Days	7,578 NM 20 Days	1,335 NM 3.4 Days	290 NM 18 Hrs	--	227 NM 14 Hrs
<b>Xingang</b>	6,187 NM 16 Days	6,587 NM 17 Days	4,749 NM 12.5 Days	7,578 NM 20 Days	8,959 NM 23 Days	1,335 NM 3.4 Days	290 NM 18 Hrs	227 NM 14 Hrs	--

Source: United States Government. "Distances Between Ports" Prepared and published by the National Imagery and Mapping Agency, Bethesda, Maryland. Ninth Edition 1997. \*Time/Speed/Distance Calculations at 16.1439 Kn/Hr., the average speed Vancouver Port lists to reach Yokohama, Hong Kong, Kaohsiung (Taiwan) and Xingang (China)



## 6. INDUSTRIAL & COMMERCIAL LAND USE

---

### LAND ZONED AND DESIGNATED IN OFFICIAL COMMUNITY PLAN

The District of Mackenzie's administrator is responsible for the designation of this land in the official community plan. For further information on the District of Mackenzie's land zoned and designated in official community plan contact the Economic Development Officer at 250-997-3221.



## LOCAL PERMIT APPROVALS - 2011

Type of Permit	Average Time for Approval	Associate Fees
Building Permit	4 weeks	Varies
Business License	2 weeks	Varies
Development Permit	4 weeks	\$200
Occupancy Permit	2 weeks	-
Re-Zoning Application/OCP Amendment	8 weeks	\$400
Subdivision Application	Varies	\$25 for 1 <sup>st</sup> parcel \$10 for each additional parcel

Data Source: District of of Mackenzie – [www.district.mackenzie.bc.ca](http://www.district.mackenzie.bc.ca)





## ACQUISITION OF CROWN LAND

- Crown land is land that is owned by the Province of British Columbia. The Province is the steward of the land and can lease, license and sell Crown land for a variety of purposes including residential, commercial, industrial, agricultural, tourism and recreational purposes.

Company	Contact	Notes
<b>Integrated Land Management Bureau</b>	<a href="mailto:FrontCounterBC@gov.bc.ca">FrontCounterBC@gov.bc.ca</a>	Develops Crown land parcels with values up to \$2.5 million
<b>Ministry of Jobs, Tourism &amp; Innovation</b>	Tel: 250-387-6121	Handles land sales related to resort development, under the All Seasons Resort Policy.
<b>Ministry of Transportation &amp; Infrastructure</b>	Tel: 250-387-3198	Handles land sales related to public airports and port authorities and the marketing of Crown land is done through MLS Realtors

- To view properties that the Federal Government of Canada has for sale, please visit: <http://reo.pwgsc.gc.ca/public/>



## 7. UTILITIES

### WATER SYSTEM

The District of Mackenzie's water is municipally supplied and comes from three wells adjacent to Morfee Lake in town and a fourth well in the rural subdivision. The water is of such high quality that it does not require any treatment.

The District of Mackenzie's Public Works is responsible for the operation of the water supply system. For further information on the District of Mackenzie's water system contact the Public Works Department at 250-997-3221.

*Data Source: District of Mackenzie – [www.district.mackenzie.bc.ca](http://www.district.mackenzie.bc.ca)*

### WATER PRODUCTION

#### District of Mackenzie

<b>Rated Capacity</b>	2.9 (mgd)
<b>Average Daily Demand</b>	0.65 (mgd)
<b>Peak Demand</b>	1.7 (mgd)
<b>Residential Cost (flat rate)</b>	\$217.67
<b>Industrial Cost / 1,000 Gallons</b>	\$2.78/1,000 gallons over 13,000 gallons
<b>Water Connection Fee: Industrial</b>	0

*Data Source: District of Mackenzie – [www.district.mackenzie.bc.ca](http://www.district.mackenzie.bc.ca)*

### WASTE WATER SYSTEM

The District of Mackenzie's sewer system consists of a 200,000 gallon mixed aeration tank, two settling ponds and an engineered wetland for final polishing.

The District of Mackenzie's Public Works is responsible for the operation of the sewer system. For further information on the District of Mackenzie's sewer system contact the Public Works Department at 250-997-3221.

*Data Source: District of Mackenzie – [www.district.mackenzie.bc.ca](http://www.district.mackenzie.bc.ca)*

### SEWAGE SERVICE

#### District of Mackenzie

<b>Rated Capacity</b>	0.66 (mgd)
<b>Average Daily Demand</b>	2,000 m <sup>3</sup> /day
<b>Peak Demand</b>	3,000 m <sup>3</sup> /day
<b>Cost per 1000 Gallons - Industrial</b>	\$1.91/1,000 gallons over 13,000 gallons
<b>Sewer Connection Fee for Industrial Users</b>	0

*Data Source: District of Mackenzie – [www.district.mackenzie.bc.ca](http://www.district.mackenzie.bc.ca)*

## LANDFILL AND WASTE MANAGEMENT

### Mackenzie Regional Landfill

Location	Mackenzie
Capacity Left at Current Site	1 to 5 years
Plans for New Capacity	Transfer Station Proposed

Data Source: District of of Mackenzie – [www.district.mackenzie.bc.ca](http://www.district.mackenzie.bc.ca)

## LICENSED HAZARDOUS MATERIALS DISPOSAL

Name of Site	None Located Directly Within The Community
No. of Licensed Hazardous Waste Haulers Serving the Area	0

Data Source: District of of Mackenzie – [www.district.mackenzie.bc.ca](http://www.district.mackenzie.bc.ca)



## ELECTRIC POWER

<b>Provider:</b> BC Hydro	<a href="http://www.bchydro.com">www.bchydro.com</a>
<b>Enquiries to hook up new property</b>	1-877-520-1355
<b>Enquiries about existing properties already hooked up</b>	1-800-224-9376
<b>Net Importer/Exporter of Power:</b>	Net Exporter – BC Hydro generates between 43,000 and 54,000 GWH of electricity annually.
<b>% of Reserve Margin Including Generation &amp; Net Purchases</b>	8% as per WSCC guidelines plus an additional 8% surplus
<b>Average Electrical Service Availability Index</b>	
▪ <b>Most Recent Year</b>	99.940
▪ <b>Last 5 Years</b>	99.9314
<b>Name of Power Pool Membership</b>	Formal membership in WSCC, WSPP, Power Pool of Alberta (PPA), MAPP. Also active in SPP and CalPX
<b>Source Electric Power Deregulated</b>	Wholesale competition allowed
<b>Residential Customers</b>	6.80 cents per kWh for the first 1,350 kWh they use over a two-month billing period. Above that amount, customers pay 10.19 cents per kWh for the balance of the electricity used during the billing period.
<b>Business Customers</b>	Average Cost Per kWh
<b>Small General Service Rate</b>	<i>Annual peak demand less than 35kW</i>
▪ <b>Basic Charge</b>	19.25 cents per day
▪ <b>All kWh</b>	\$0.0915 per kWh
▪ <b>Minimum Charge</b>	The Basic Charge
▪ <b>Rate Rider</b>	5% Rate Rider applied to all charges, before taxes and levies.
<b>Medium General Service Conservation Rate</b>	<i>Annual peak demand between 85 and 150 kW</i>
▪ <b>Basic Charge</b>	19.25 cents per day
▪ <b>Demand Charge</b>	\$0.00 per kW for first 35 kW \$4.69 per kW for next 115 kW \$9.00 per kW for remaining kW
▪ <b>Energy Charge</b>	Part 1: First 14,800 kWh \$0.0897 per kWh All additional kWh \$0.0490 per kWh up to baseline Part 2: \$0.0942 per kWh for usage up to 20% above baseline \$0.0942 per kWh for savings down to 20% below baseline (credit) Usage or savings beyond 20% of baseline are based on Part 1 prices



<ul style="list-style-type: none"> <li>▪ <b>Discounts</b></li> </ul>	<p>1.5% on entire bill if customer's electricity is metered at primary potential</p> <p>\$0.25 per kW if customer supplies transformation from a primary to a secondary potential.</p> <p>If a customer is entitled to both discounts the 1.5% discount is applied first.</p>
<ul style="list-style-type: none"> <li>▪ <b>Minimum Charge</b></li> </ul>	<p>50% of the highest maximum demand charge billed in any month within an on-peak period (1 November to 31 March inclusive) during the preceding 11 months.</p>
<ul style="list-style-type: none"> <li>▪ <b>Rate Rider</b></li> </ul>	<p>5% Rate Rider applied to all charges, before taxes and levies.</p>
<b>Medium General Service Interim Rate</b>	
<i>Annual peak demand between 35 and 150 kW. MGS accounts are moving from the MGS Interim Rate to the new MGS Conservation Rate which better encourages conservation.</i>	
<ul style="list-style-type: none"> <li>▪ <b>Basic Charge</b></li> </ul>	<p>\$0.1925 per day</p>
<ul style="list-style-type: none"> <li>▪ <b>Demand Charge</b></li> </ul>	<p>\$0.00 per kW for first 35 kW</p> <p>\$4.69 per kW for next 115 kW</p> <p>\$9.00 per kW for remaining kW</p>
<ul style="list-style-type: none"> <li>▪ <b>Energy Charge</b></li> </ul>	<p>\$0.0897 per kWh for last 14,800 kWh</p> <p>\$0.0490 per kWh for remaining kWh</p>
<ul style="list-style-type: none"> <li>▪ <b>Discounts</b></li> </ul>	<p>1.5% on entire bill if customer's electricity is metered at primary potential</p> <p>\$0.25 per kW if customer supplies transformation from a primary to a secondary potential</p> <p>If a customer is entitled to both discounts the 1/5% discount is applied first</p>
<ul style="list-style-type: none"> <li>▪ <b>Monthly Minimum Charge</b></li> </ul>	<p>50% of the highest maximum demand charge billed in any month within an on-peak period (1 November to 31 March inclusive) during the preceding 11 months</p>
<ul style="list-style-type: none"> <li>▪ <b>Minimum Energy Charge</b></li> </ul>	<p>\$0.0281 per kWh applies when the Energy Charge (Part 1 and 2) divided by the total kWh is less than \$0.0281 per kWh</p>
<ul style="list-style-type: none"> <li>▪ <b>Rate Rider</b></li> </ul>	<p>5% Rate Rider applied to all charges, before taxes and levies</p>
<b>Large General Service Conservation Rate</b>	
<i>Annual peak demands equal to or greater than 150 kW or total annual energy usage of at least 550,000kWh.</i>	
<ul style="list-style-type: none"> <li>▪ <b>Basic Charge</b></li> </ul>	<p>\$0.1925 per day</p>
<ul style="list-style-type: none"> <li>▪ <b>Demand Charge</b></li> </ul>	<p>\$0.00 per kW for first 35 kW</p> <p>\$4.69 per kW for next 115 kW</p> <p>\$9.00 per kW for remaining kW</p>
<ul style="list-style-type: none"> <li>▪ <b>Energy Charge</b></li> </ul>	<p>Part 1:</p> <p>\$0.0937 per kWh for first 14,800 kWh</p> <p>\$0.0451 per kWh for remaining kWh up to baseline</p> <p>Part 2:</p>

	<p>\$0.0942 per kWh for usage up to 20% above baseline</p> <p>\$0.0942 per kWh for savings down to 20% below baseline (credit)</p> <p>Usage or savings beyond 20% of baseline are based on Part 1 prices</p>
<ul style="list-style-type: none"> <li>▪ <b>Discounts</b></li> </ul>	<p>1.5% on entire bill if customer's electricity is metered at primary potential</p> <p>\$0.25 per kW if customer supplies transformation from a primary to a secondary potential</p> <p>If a customer is entitled to both discounts the 1.5% discount is applied first</p>
<ul style="list-style-type: none"> <li>▪ <b>Monthly Minimum Charge</b></li> </ul>	<p>50% of the highest maximum demand charge billed in any month within an on-peak period (1 November to 31 March inclusive) during the preceding 11 months</p>
<ul style="list-style-type: none"> <li>▪ <b>Minimum Energy Charge</b></li> </ul>	<p>\$0.0281 per kWh applies when the Energy Charge (Part 1 and 2) divided by the total kWh is less than \$0.0281 per kWh</p>
<ul style="list-style-type: none"> <li>▪ <b>Rate Rider</b></li> </ul>	<p>5% Rate Rider applied to all charges, before taxes and levies</p>
<b>Industrial: Transmission Service</b>	
	<p><i>Mines, chemical plants, large sawmills, pulp and paper mills, large manufacturing</i></p>
<ul style="list-style-type: none"> <li>▪ <b>Demand Charge</b></li> </ul>	<p>\$6.263 per kVA of billing demand</p>
<ul style="list-style-type: none"> <li>▪ <b>Energy Charge</b></li> </ul>	<p>\$0.03261 per kWh applied to all kWh up to and including 90% of the customers baseline load (CBL) in each billing year.</p> <p>\$0.07360 per kWh applied to all kWh above 90% of the CBL in each billing year.</p>
<ul style="list-style-type: none"> <li>▪ <b>Minimum Charge</b></li> </ul>	<p>\$6.027 per KVa of billing demand per billing period</p>
<ul style="list-style-type: none"> <li>▪ <b>Rate Rider</b></li> </ul>	<p>5% Rate Rider applied to all charges, before taxes and levies.</p>

Data Source: BC Hydro "Rates" – [www.bchydro.com](http://www.bchydro.com)



## NATURAL GAS

Fortis BC	<a href="http://www.fortisbc.com">www.fortisbc.com</a>
Rate Territory	Inland Region
Firm Contract Rates (2011)	
Type of Customer	Small Industrial (RS 2)
Basic & Administration Charge (Monthly)	\$24.48 (CDN)
Delivery & Commodity Demand Charge (per GJ)	\$5.873 (CDN)

Data Source: FortisBC – “Rate Schedules” – [www.fortisbc.com](http://www.fortisbc.com)



## TELECOMMUNICATIONS

<b>Name of Provider</b>	<b>Telus</b>
<b>Address</b>	#5-3777 Kingsway Burnaby, BC V5H 3Z7
<b>Website</b>	<a href="http://www.telus.com">www.telus.com</a>
<b>Contact#</b>	
▪ Residential	Tel: 250-310-2255
▪ Business	Tel: 250-310-3100
<b>Service Characteristics of The Office:</b>	
▪ Switch Technology	Digital
▪ Fiber Service provided	No
▪ 100 Mbps LAN Service Available	No
▪ Monitoring- Remotely or On-Site	Remotely
▪ ISDN Available	No
▪ ADSL Available	No
▪ ADSL Available From Switch	No
▪ Central Office on Self-Healing Fiber Ring	No
▪ Dual Feed from Two Separate Switching Offices	No
▪ Multiple Route Diversity	No

Data Source: Northern Development Research – [www.northerndevelopment.bc.ca](http://www.northerndevelopment.bc.ca)





8. BUSINESS SUPPORT SERVICES

Business Support Services	
Machine Shop (Tool & Die)	1
Welding	3
Office Equipment Service & Repair	0
Temporary Employment Services	0
International Support Services	
Import/Export Brokers	0
International Courier Services	2
Freight Forwarders	1

Data Source: District of of Mackenzie – [www.district.mackenzie.bc.ca](http://www.district.mackenzie.bc.ca)



## 9. GOVERNMENT

### MUNICIPAL GOVERNMENT

#### District of Mackenzie

Form (Structure)	Mayor & Council
Number of Elected Officials	7
Mayor	Stephanie Killam
Chief Administrative Officer	Mark Fercho

### REGIONAL DISTRICT

#### Regional District of Fraser-Fort George

Form (Structure)	Board of Directors
Number of Elected Officials	14
Chair	Art Kaehn

### PROVINCIAL

#### Government of British Columbia

Form (Structure)	British Parliamentary
Number of Elected Officials	85
How Often Does Legislature Convene	2012-May 16-19, 24-26, 30,31, June 1,2

### PREMIER

Name	Christy Clark
Affiliation	British Columbia Liberal Party
Year Elected	May 11, 2011
Current Term Expiration	2 Years
Allowed to Run for Another Term	Yes
Next Election Date	Tuesday, May 14, 2013

## PROVINCIAL GOVERNMENT REPRESENTATION

<b>Name of Member of Legislative Assembly (MLA)</b>	Patrick Bell
<b>Total Members of Legislative Assembly</b>	1
<b>Electoral District</b>	Prince George-Mackenzie
<b>Party Affiliation</b>	British Columbia Liberal Party

## FEDERAL GOVERNMENT REPRESENTATION

<b>Name of Member of Parliament (MP)</b>	Bob Zimmer
<b>Electoral District</b>	Prince George-Peace River
<b>Year Elected</b>	May 2, 2011
<b>Party Affiliation</b>	Conservative Party of Canada

## SENATORS

<b>No. of Appointed Officials</b>	In Canada there are ordinarily 105 Senators appointed by the Governor General on the advice of the Prime Minister.
-----------------------------------	--





10. HOUSING

HOUSING CHARACTERISTICS

Dwelling Type	Number
Single-detached houses	1,075
Movable dwelling	205
Other dwelling	230
Semi-detached houses	0
Row houses	115
Apartments, duplex	110
Other single-attached house	5
Total private dwellings	1,890

Data Source: StatsCan – 2011 Census – “Community Profile”

AVERAGE HOUSING VALUES

Municipality	Single Family Homes	Multi-Family Homes	Total Property Tax & Charges
District of Mackenzie	\$97,254 CDN	-	\$1,539

Data Source: Local Government Statistics, Ministry of Community, Sports & Cultural Development – [www.cscd.gov.bc.ca/lgd/infra/tax\\_rates/tax\\_rates2011.html](http://www.cscd.gov.bc.ca/lgd/infra/tax_rates/tax_rates2011.html)





## 11. TAXATION

### CORPORATE INCOME TAX

	Small Business	Manufacturing	Non-Manufacturing
<b>Federal</b>			
▪ Rate	11%	16.5%	16.5%
▪ Formula (Sales, Property & Payroll)	n/a	n/a	n/a
▪ Accelerated Depreciated Permitted	Yes	Yes	Yes
<b>Provincial</b>			
▪ Rate	2.5%	10.0%	10.0%
▪ Formula (Sales, Property & Payroll)	Sales & Payroll	Sales & Payroll	Sales & Payroll
▪ Accelerated Depreciated Permitted	No	No	No
<b>Local</b>			
<i>British Columbia has no local taxes</i>			
<b>Total Federal and Provincial Corporate Income Tax</b>	<b>13.5%</b>	<b>26.5%</b>	<b>26.5%</b>

### PERSONAL INCOME TAX

	Federal	State/Provincial	Local
<b>Earned Income</b>	15 – 29%	5.06 – 14.7%	0%
<b>Unearned Income (e.g. Dividends)</b>	0 – 14.55%	0 – 3.92%	0%
<b>Capital Gains</b>	7.5 – 14.5 %	2.08 – 7.35%	0%

### SALES / USE TAX

	Rate	Notes
<b>Harmonized Sales Tax</b>	12%	HST on business inputs is fully recoverable
<b>Local</b>	0%	BC has no local sales tax
<b>Total (Effective Combined Rate) Business</b>	7%	Net of GST 0% for production machinery and equipment for eligible manufacturers

## SALES TAX RATE BY UTILITY

	Yes/No	Rate	Notes
Electric Power	Yes	12%	HST is fully recoverable
Natural Gas	Yes	12%	HST is fully recoverable
Fuel Oil	Yes	12%	HST is fully recoverable
Water	No	0%	-
Sewer	No	0%	-
Hazardous Waste Disposal	Yes	12%	HST is fully recoverable

## TELEPHONE SUBJECT TO SALES/USE TAX

	Yes/No	Rate	Notes
Local	Yes	12%	HST is fully recoverable
Long Distance	Yes	12%	HST is fully recoverable

## MACHINERY AND EQUIPMENT SUBJECT TO SALES/USE TAX

	Yes/No	Rate	Notes
Production	No	0%	-
Non-Production	Yes	12%	HST is fully recoverable
Pollution Control	Yes	12%	HST is fully recoverable
Office Equipment & Fixtures	Yes	12%	HST is fully recoverable

## SALES/USE TAX ON TANGIBLE PROPERTY

	Yes/No	Rate	Notes
Office Building Construction Materials	Yes	12%	HST is fully recoverable
Industrial Building Construction Materials	Yes	12%	HST is fully recoverable
Manufactures Raw Materials	No	0%	-
Standard Software	Yes	12%	HST is fully recoverable
Custom Software	Yes	12%	HST is fully recoverable

## SALES/USE TAX ON INTANGIBLE PROPERTY

	Yes/No	Rate	Notes
Accounts Receivable	No	0%	-
Capital Stock	No	0%	-
Stock/Bond Transaction Fee	No	0%	-

## PROPERTY TAX

Levy	Residential	Utility	Major Industry	Light Industry	Business	Non-Profit	Farm
General Municipal	6.622	37.786	29.955	27.006	15.115	6.622	6.622
General Debt	0	0	0	0	0	0	0
Regional District	0.755	2.643	2.567	2.567	1.85	0.755	0.755
Hospital	0.378	1.324	1.286	1.286	0.927	0.378	0.378
Police	0.3559	1.2455	1.2099	1.2099	0.8719	0.3559	0.3559
MFA	0.0002	0.0007	0.0007	0.0007	0.0005	0.0002	0.0002
BCAA	0.0599	0.5113	0.5113	0.1843	0.1843	0.0599	0.0599
School	3.1607	14.2	2.56	2.56	6.4	3.4	6.9
<b>TOTAL</b>	<b>11.3313</b>	<b>57.7109</b>	<b>38.0901</b>	<b>34.8141</b>	<b>25.3483</b>	<b>11.5706</b>	<b>15.0706</b>

Data Source: District of Mackenzie – [www.district.mackenzie.bc.ca](http://www.district.mackenzie.bc.ca)

Property Tax rates effective 2012, Property Tax rates per \$1000 Assessed Personal Property (M&E, Inventory, Other)

Municipal Note: BC does not have Personal Property Taxes.



## 12. INTERNATIONAL RESOURCES

### INVESTMENT AND BUSINESS SUPPORT OFFICES

---

#### Mackenzie Chamber of Commerce

Contact Name	Janey Morgan, Chamber Manager
Address	88 Centennial Drive, Mackenzie, BC V0J 2C0
Phone Number	Tel: 250-997-5459
E-Mail	<a href="mailto:office@mackenziechamber.bc.ca">office@mackenziechamber.bc.ca</a>

---

#### Northern Development Initiative Trust

Contact Name	Dennis Callaghan, Chief Financial Officer
Address	301 – 1268 Fifth Avenue, Prince George, BC V2L 3L2
Phone Number	Tel: 250- 561-2525
E-Mail	<a href="mailto:dennis@northerndevlopment.bc.ca">dennis@northerndevlopment.bc.ca</a>

---

#### Community Futures Fraser Fort George

Contact Name	Susan Stearns, General Manager
Address	1566 – 7 <sup>th</sup> Avenue, Prince George, BC V2L 3P4
Phone Number	Tel: 250-562-9622 1-800-661-2055
Email	<a href="mailto:susans@cfdc.bc.ca">susans@cfdc.bc.ca</a>

---

#### Ministry of Jobs, Tourism, and Innovation – Regional Economic Operations

Contact Name	Dale Richardson, Regional Director
Address	125 Market Place, Prince Rupert, BC V8J 1B9
Phone Number	Tel: 250-624-7499
E-Mail	<a href="mailto:dale.richardson@gov.bc.ca">dale.richardson@gov.bc.ca</a>

---

#### Invest BC

Contact Name	Michael Track, A/Executive Director – Investor Services
Address	999 Canada Place, Suite 730, Vancouver, BC V6C 3E1
Phone Number	Tel: 604-775-2202
E-Mail	<a href="mailto:michael.track@gov.bc.ca">michael.track@gov.bc.ca</a>

---



## FINANCIAL INSTITUTIONS

Name of Company	Address	Telephone	Website
Bank of Nova Scotia	403 Mackenzie Blvd Mackenzie, BC V0J 2C0	250-997-3223	<a href="http://www.scotiabank.com">www.scotiabank.com</a>
RBC Royal Bank	119-403 Mackenzie Blvd, Mackenzie, BC V0J 2C0	250- 997-3213	<a href="http://www.rbcroyalbank.com">www.rbcroyalbank.com</a>

Data Source: District of Mackenzie – [www.district.mackenzie.bc.ca](http://www.district.mackenzie.bc.ca)

## EMPLOYMENT ASSISTANCE

Name of Company	Address	Telephone	Website
Mackenzie Employment Services Centre	540 Mackenzie Blvd, Mackenzie, BC V0J 2C0	250- 977-7208	<a href="http://www.workbcmackenzie.ca">www.workbcmackenzie.ca</a>

Data Source: District of Mackenzie – [www.district.mackenzie.bc.ca](http://www.district.mackenzie.bc.ca)



## AIR TRANSPORTATION SERVICE

<b>Largest International Airport</b>	<b>Vancouver</b>	
<b>Distance to Airport</b>	980 km	
<b>Customs Point of Entry</b>	Yes	
<b>Foreign Trade Zone</b>	No	
<b>Full Instrumentation</b>	Yes	
<b>No. of Runways</b>	3	
<b>Runway Length</b>	3,030 m; 3,500 m; 2,225 m	
<b>Carriers</b>	<ul style="list-style-type: none"> <li>▪ <b>Passenger</b> 62 (Including 13 code share)</li> <li>▪ <b>Cargo</b> 6</li> <li>▪ <b>Charter</b> 8 (Included in Passenger carriers)</li> </ul>	
<b>Weekly Non-Stop Flights</b>	4289 departures	
<b>Air Service to Northwest Regional Airport</b>	<b>Flight Frequency</b>	<b>Flight Duration</b>
Air Canada <a href="http://www.aircanada.com">www.aircanada.com</a>	4/day, Sunday-Friday 2/day, Saturday	1:20 hr
Hawkair <a href="http://www.hawkair.ca">www.hawkair.ca</a>	2/day, Sunday-Friday 1/day, Saturday	2 Hrs



<b>Closest International Airport</b>	<b>Prince George</b>	
<b>Distance to Airport</b>	196 km	
<b>Customs Point of Entry</b>	Yes	
<b>Foreign Trade Zone</b>	No	
<b>Full Instrumentation</b>	Yes	
<b>No. of Runways</b>	3	
<b>Runway Length</b>	3,490 m; 1,714 m; 1,352 m	
<b>Carriers</b>		
▪ <b>Passenger</b>	Air Canada Jazz, Central Mountain Air, WestJet	
▪ <b>Cargo</b>	Puralator, DHL	
▪ <b>Charter</b>	Northern Thunderbird Air, Vancouver Island Helicopter, Flair Airlines, Air North	
<b>Weekly Non-Stop Flights</b>	83	
<b>Air Service to Northwest Regional Airport</b>	<b>Flight Frequency</b>	<b>Flight Duration</b>
<b>Central Mountain Air</b> <a href="http://www.flycma.com">www.flycma.com</a>	1/day Monday - Friday 2/day Sunday	1:10 hr



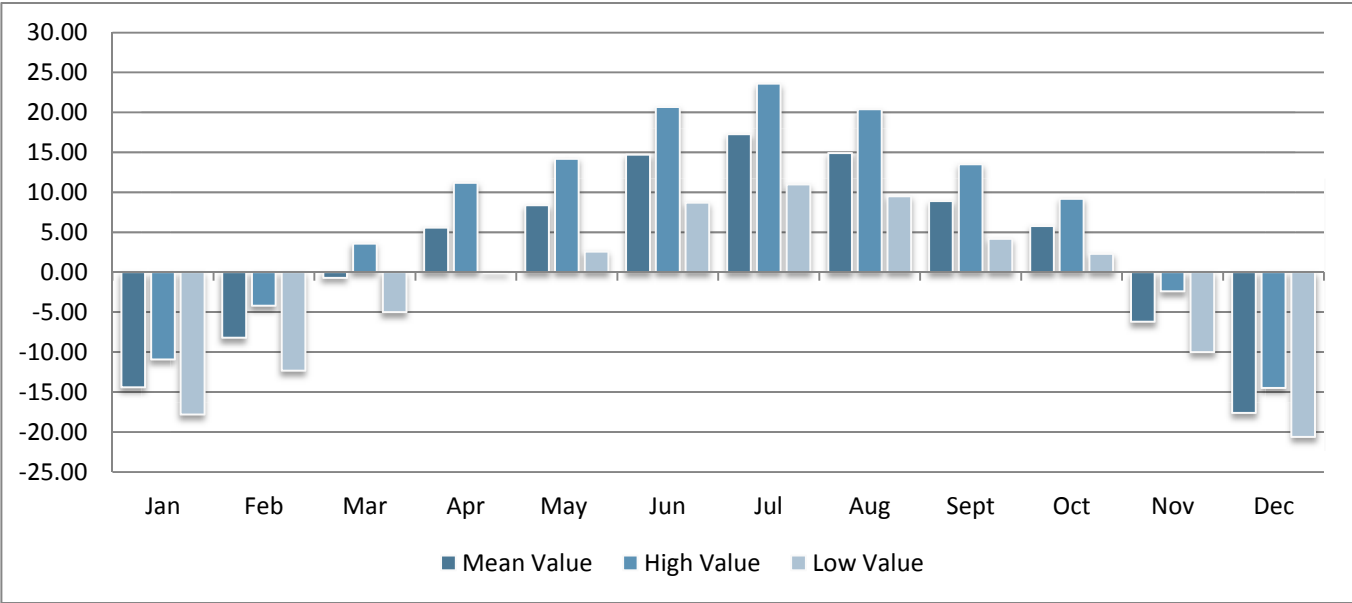
# 13. QUALITY OF LIFE

## CLIMATE

Location: Mackenzie, BC Canada  
Latitude: 55°33.809' N  
Longitude: -123°09.443' W



### AVERAGE TEMPERATURE IN DEGREES CELSIUS BY MONTH – 2010



Data Source: Environment Canada - "National Climate Data And information Archive" – [www.climate-charts.com/Countries/Canada.html#BC](http://www.climate-charts.com/Countries/Canada.html#BC)



## CULTURE

### TOP ANNUAL EVENTS

Top Events	Date(s)
Cabin Fever Carnival	February
Trade Show	May
Alexander Mackenzie Days	June
Mackenzie Elks Family Fishing Derby	June
Show + Shine	July
Leisure Fair	September
Festival of Bells Craft Fair	November
Christmas Celebration	December

Data Source: District of Mackenzie – [www.district.mackenzie.bc.ca](http://www.district.mackenzie.bc.ca)

### CULTURAL PLACES AND AMENITIES

Amenity	Number
▪ Libraries	1
▪ Museums	1
▪ Art Gallery	1

Data Source: District of Mackenzie – [www.district.mackenzie.bc.ca](http://www.district.mackenzie.bc.ca)



### CULTURE AND RECREATION

Amenity	Number
Number of Enclosed Shopping Malls	1
Religion	
▪ Catholic Churches	1
▪ Protestant Churches	3
▪ Synagogues	0
▪ Other Religious Institutions	2

Data Source: District of Mackenzie – [www.district.mackenzie.bc.ca](http://www.district.mackenzie.bc.ca)



## RECREATIONAL AMENITIES WITHIN 2 HOURS

Amenity	Activity
▪ Little Mac Ski Hill	Downhill Skiing/Snowboarding, Sledding
▪ Powder King Mountain Resort	Downhill Skiing/Snowboarding
▪ Mackenzie Golf & Country Club	Golfing
▪ Mackenzie Lanes	Bowling
▪ Tennis Courts	Tennis
▪ Mackenzie Recreation Centre	Ice Hockey, Curling, Swimming, Fitness Centre, Children's Playroom
▪ John Dahl Regional Park	Cross Country Skiing, Biking, Sledding, Snowshoeing, Hiking
▪ Morfee Lake	Swimming, Boating, Fishing, Canoeing, Biking, Hiking
▪ Gantahaz Lake	Boating, Picnicing,
▪ Heather-Dina Lakes Provincial Park	Camping, Canoe Portages
▪ Alexander-Mackenzie Landing	Camping, Hiking, Boating, Fishing, Swimming
▪ Tudyah Lake Provincial Park	Camping, Boating
▪ Whiskers Point Provincial Park	Camping, Swimming, Fishing, Boating
▪ Carp Lake Provincial Park	Camping, Boating, Fising

Source: District of Mackenzie – [www.district.mackenzie.bc.ca](http://www.district.mackenzie.bc.ca)



## HEALTH

### HOSPITALS

<b>Hospital</b>	<b>The Mackenzie &amp; District Hospital and Health Centre</b>
<b>Teaching Hospital</b>	No
<b>Number of Beds</b>	9
<b>Outpatient Clinic</b>	Yes
<b>Contact</b>	45 Centennial Drive, Mackenzie, BC V0J 2C0 Tel: 250-997-3263

Data Source: District of Mackenzie – [www.district.mackenzie.bc.ca](http://www.district.mackenzie.bc.ca)

<b>Hospital</b>	<b>The University Hospital of Northern British Columbia</b>
<b>Teaching Hospital</b>	Yes
<b>Number of Beds</b>	209
<b>Outpatient Clinic</b>	Yes
<b>Contact</b>	1475 Edmonton Street, Prince George, BC V2M 1S2 Tel: 250-565-2000

Data Source: Northern Health – [www.northernhealth.ca](http://www.northernhealth.ca)

### PHYSICIANS AND DENTISTS

<b>Health Providers (Mackenzie)</b>	<b>Total</b>
<b>Physicians</b>	3
<b>Nurse Practitioners</b>	1
<b>Dentists</b>	1
<b>Ratio Physicians per 1000</b>	0.6 : 1000
<b>Ratio Dentists per 1000</b>	0.2 : 1000

Data Source: District of Mackenzie – [www.district.mackenzie.bc.ca](http://www.district.mackenzie.bc.ca)



**Diane Smith**

Director of Corporate Services

**District of Mackenzie**

1 Mackenzie Boulevard, Mackenzie, BC V0J 2C0

Tel: 250-997-3221

Email: [diane@district.mackenzie.bc.ca](mailto:diane@district.mackenzie.bc.ca)

[www.district.mackenzie.bc.ca](http://www.district.mackenzie.bc.ca)



**Northern Development Initiative Trust**

Contact for information on financial incentives for manufacturing companies

[www.northerndevelopment.bc.ca](http://www.northerndevelopment.bc.ca)



**TRADE AND INVEST  
BRITISH COLUMBIA**

**Invest BC**

Contact for investor site selection and expansion services.

[www.investbc.com](http://www.investbc.com)