



The Mackenzie Chamber of  
Commerce

Box 880  
88 Centennial Drive  
Mackenzie BC V0J 2C0

Visitor Information Centre  
(May – September)

Junction of Hwy 39 and 97  
Phone: 250.750.4497

Chamber Office (Year Round)  
Phone: 250.997.5459

Toll Free: 1.877.688.5360  
Fax: 250.997.6117

E-mail:

[office@mackenziechamber.bc.ca](mailto:office@mackenziechamber.bc.ca)

Web: [www.mackenziechamber.bc.ca](http://www.mackenziechamber.bc.ca)

and/or

District of Mackenzie

Bag 340  
1 Mackenzie Boulevard  
Mackenzie BC V0J 2C0

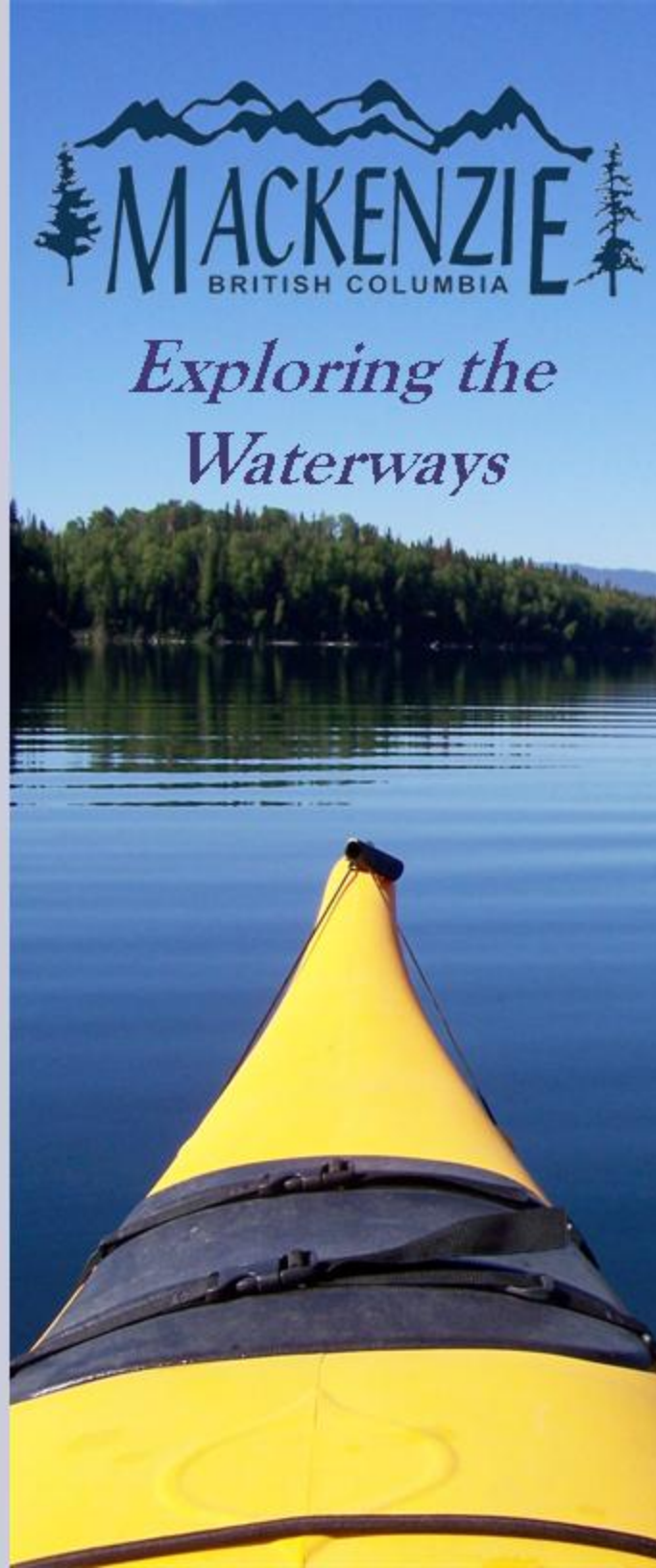
Phone: 250.997.3221  
Toll Free: 1.877.997.9940  
Fax: 250.997.5186

E-mail: [info@district.mackenzie.bc.ca](mailto:info@district.mackenzie.bc.ca)

Web: [www.district.mackenzie.bc.ca](http://www.district.mackenzie.bc.ca)



All maps taken from [www.fishwizard.com](http://www.fishwizard.com)



## Water Adventures Await!



Photo courtesy of Pytlowany Photography

### Exploring Mackenzie's Waterways...

Mackenzie's extensive outdoor playground has something for every enthusiast whether you use a kayak, canoe, car-top or jet boat.

From the glass-like waters of Morfee Lake to the open waters of Williston Lake, Mackenzie has various waterways to be explored by everyone from beginner to expert.

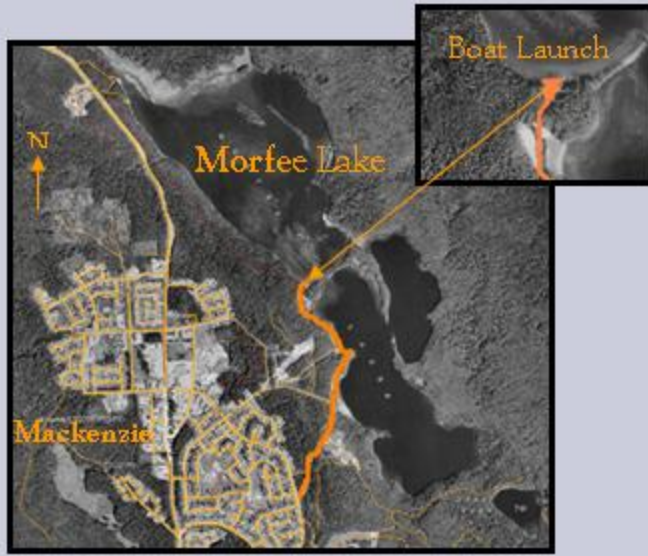
Test your sense of adventure – whether it's a simple afternoon outing, a day trip, or a week-long adventure – the waters await!

### The ABCs of Boating...

- Always carry spare fuel
- Be sure your experience matches the water you are exploring
- Be watchful of wildlife in the area
- Check the weather forecast
- Comply with all motor or boat restrictions
- Follow all safety regulations
- Tell someone where you are going and when you will be returning
- Tie food rations, water, and a first aid kit to the boat in a water proof container



# Mackenzie's Outdoor Water Playground



## Morfee Lake

This lake is conveniently located 2 km east of Mackenzie and is accessed from Centennial Drive by a gravel road. In a typical year the lake is accessible as early as May and as late as October.

Morfee Lake is divided into two sections by a large sandbar. First Beach is restricted to canoes, kayaks, and electric motor boats. The sandy beach makes easy access for putting into the water. This portion of the lake is ideal for the family or large groups looking for multiple activities in the same area – swimming, canoeing, kayaking, or sunbathing.

The waters in this area are very clear. The lake itself provides many shores for exploration within a two hour timeframe and is great for both the beginner and novice paddler.

Second Beach is located 2 km past First Beach on the same access road and has a boat launch area for any size boat. Parking for your vehicle is provided in an area above the boat launch.

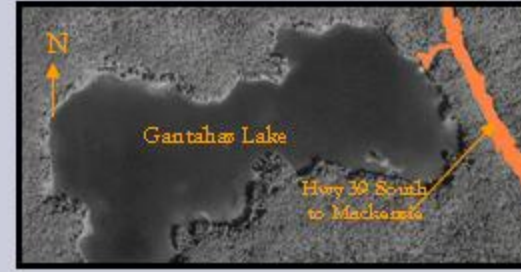
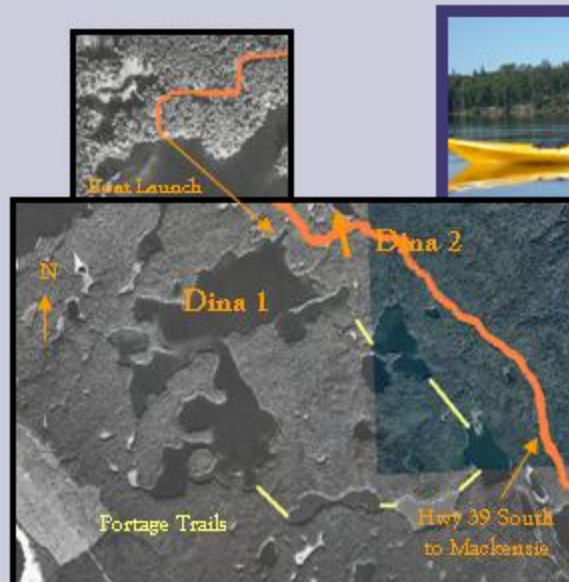
The beautiful waters in this section of the lake are ideal for water skiing, wake boarding or touring. This lake is perfect for the inexperienced or novice boater.

## Dina Lakes

The Dina Lakes are located 30 km north of Mackenzie on the Parsnip West Forest Service Road located in Heather-Dina Provincial Park. There is a boat launch (pictured in the inset photo on the Dina Map) at the forest campsite at Dina Lake. Dina 1 is restricted to 10 hp or 7.5 kw motors or less – and is mostly used by canoes, kayaks, and small boats. Dina 2 is restricted to electric motors only. No motors are allowed on the remaining lakes.

The lakes also have a portage trail that link each lake, as marked on the map in yellow. A word of caution, this trail is overgrown and has many fallen trees on it, but for the experienced hiker or someone familiar with the area, it would present a fun adventure. The trail typically takes 4 – 5 hours.

These lakes are perfect for making a day trip to view the beautiful wildlife, the many shores, and have a picnic lunch on the island located in the main lake. These lakes are ideal for the tourist looking for a little more privacy mixed with a little bit of exploration.

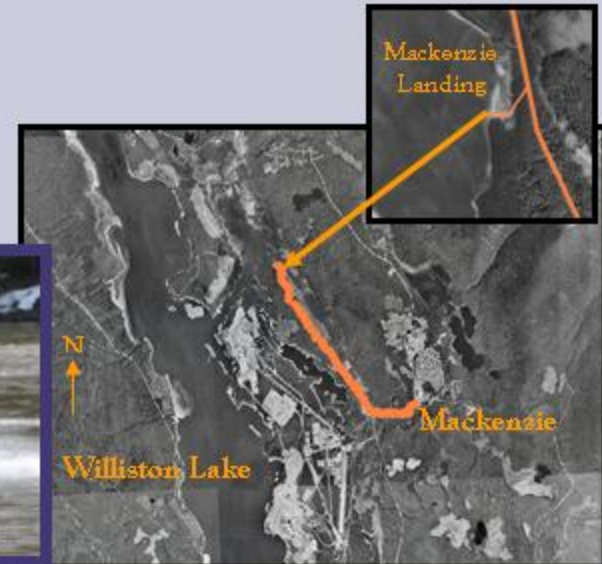


## Gantahaz Lake

This beautiful lake is conveniently located 5 km north of Mackenzie on Highway 39. Simply turn left off Highway 39 directly into the Gantahaz Lake area between May and October.

While restricted to canoes, kayaks, and 7.5 kw motors, this small lake allows for an easy one-hour paddling adventure around the edges of the lake for even the most inexperienced paddler. It's a perfect destination for a family out to enjoy a day on the lake together. There is also a nature trail around the entire lake if you like to explore both water and land. Wildlife does frequent this placid lake so be prepared to see an eagle, beaver or bear.

Enjoy the gorgeous view and the fresh air while you paddle your way through the calm waters.



## Williston Lake

This lake covers over 250 km and is easily accessible 7 km outside of Mackenzie from May until late October. Take Highway 39 south from Mackenzie for 1 km and turn right onto the Parsnip West Forest Service Road and follow the signs for 6 km out to Alexander Mackenzie's Landing.

All types of water adventures are welcome – jet boats, kayaks and canoes – but boater safety should be followed at all times. Boaters must also be aware of reservoir levels when operating boats – submerged stumps and objects present many hazards.

The lake has many arms to explore, so it is best to be an experienced jet-boater or take a tour with someone familiar with the area. For novice to intermediate paddlers, there are many creeks and rivers attached to the lake. To access these creeks, take Highway 39 north from Mackenzie and follow the gravel road (Parship West Forest Service Road). Water access is available at Cut Thumb Bay, Six Mile Bay, and Finlay Forks for car-top style boats. Boat launch for jet boats is only available at Alexander Mackenzie's Landing.